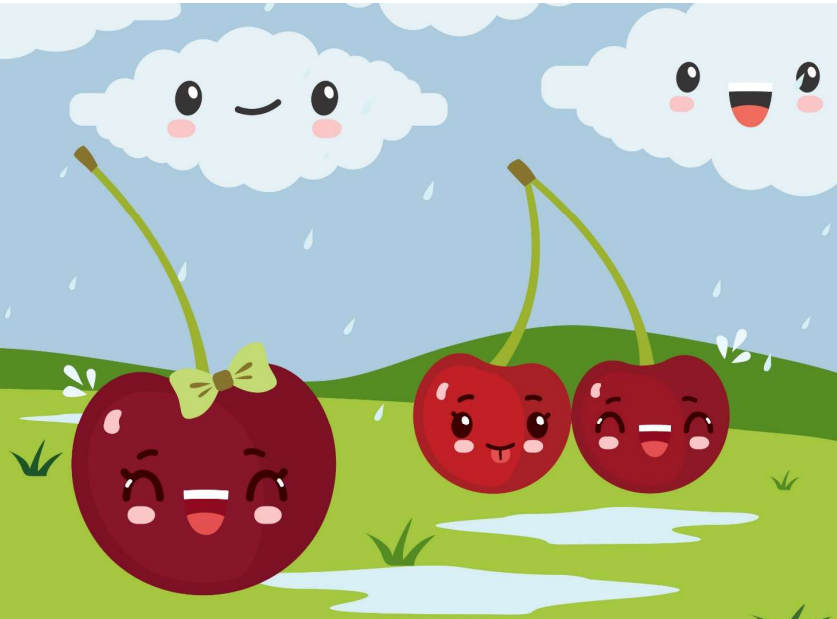




# APRIL 2025 Breakfast Menu



ACE'S CORNER



Milk: 1% White & Skim White are offered daily at breakfast!

Fresh Fruit served daily with breakfast!

MONDAY	TUESDAY	WEDNESDAY	THURSDAY	FRIDAY
31 <b>Honey Nut Cheerios Cereal</b>	1 <b>Blueberry Nutri-Grain Bar</b>	2 <b>Banana Muffin</b>	3 <b>Turkey Pancake Wrap</b>	4 <b>No 4K</b>
7 <b>Blueberry Breakfast Bread</b>	8 <b>Honey Nut Cheerios Cereal</b>	9 <b>Sausage Breakfast Sandwich</b>	10 <b>Yogurt &amp; Goldfish Pretzel Crackers</b>	11 <b>No 4K</b>
14 <b>Oatmeal Chocolate Chip Bar w/ Cheese Cubes</b>	15 <b>Cheese Bosco Sticks</b>	16 <b>Yogurt &amp; Animal Crackers</b>	17 <b>Strawberry Nutri-Grain Bar</b>	18 <b>No 4K</b>
21 <b>No School</b>	22 <b>Animal Crackers &amp; String Cheese</b>	23 <b>Country Chicken Biscuit</b>	24 <b>Yogurt &amp; Giant Vanilla Goldfish Grahams</b>	25 <b>No 4K</b>
28 <b>Frosted Flakes Cereal</b>	29 <b>Cheese Bosco Sticks</b>	30 <b>Egg &amp; Cheese English Muffin</b>	1 <b>Banana Chocolate Bar</b>	2 <b>No 4K</b>

# PIE IN THE SKY

Cherries are known as drupes or stone fruits, like nectarines and peaches, and are high in antioxidants. There are more than 500 varieties of sweet cherries (*Prunus Avium*), and almost as many tart ones (*Prunus Cerasus*); though only a small percentage—around 20 or so altogether—are sold commercially. A typical cherry tree produces 7,000 cherries, that can be harvested in seven seconds using a mechanical tree shaker. The state of Washington grows an estimated 62 percent of the United States' sweet cherries, which are great summer snacks. Michigan, meanwhile, grows well over half of the country's tart cherries, which are mostly used for cooking.

## DID YOU KNOW?

### FOLLOW THE CHERRY TREE ROAD

Cherries were part of the Roman soldiers' rations, and as they traveled, the pits they discarded became the trees that bloomed throughout the empire. There was a saying that to find the old Roman roads, all one had to do was follow the wild cherry trees



## ACE'S JOKE OF THE MONTH

### WHY ARE CHOCOLATE-COVERED CHERRIES THE PERFECT DINNER PARTY HOSTS?

SEE ANSWER BELOW



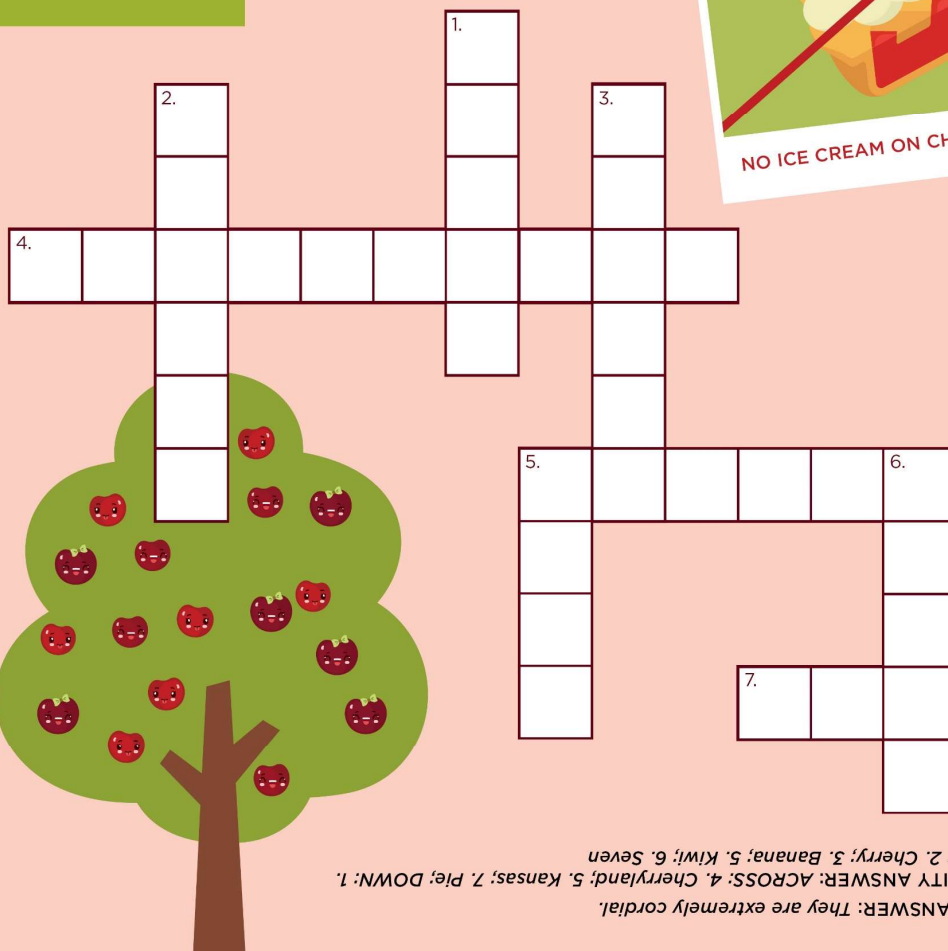
## ACTIVITY: CROSSWORD PUZZLE

### ACROSS

4. Door County, Wisconsin's nickname, earned by its production of 95% of the nation's tart cherries
5. State that once prohibited ice cream be served on cherry pie
7. Cherries, apples, and blueberries make great filling for this dessert

### DOWN

1. Fruit often bobbed for in the fall and rumored to help keep the doctor away
2. Type of tree George Washington was rumored to have chopped down in his youth
3. A monkey's favorite fruit
5. Tropical fruit that shares its name with a flightless bird—this fruit is green on the inside, with a brown and fuzzy outside
6. The number of seconds it takes to harvest a cherry tree using special machinery



JOKE ANSWER: They are extremely cordial.  
ACTIVITY ANSWER: ACROSS: 4. Cherryland; 5. Kansas; 7. Pie; DOWN: 1. Apple; 2. Cherry; 3. Kiwi; 5. Kiwi; 6. Seven